

Bahia Network Driver

Release 0.9 beta

Windows XP Setup

- **Handhelds Side**

-

1. Load usb-eth module :

```
modprobe usb-eth
```

2. Configure the usb network interface with an IP address from an unused private network (take care not to use the same network than the one used on your PC's ethernet interface)

```
ifconfig usbf 192.168.0.2 netmask 255.255.255.0
route add default gw 192.168.0.1
```

3. Setup a nameserver on your SA1110 handhelds :

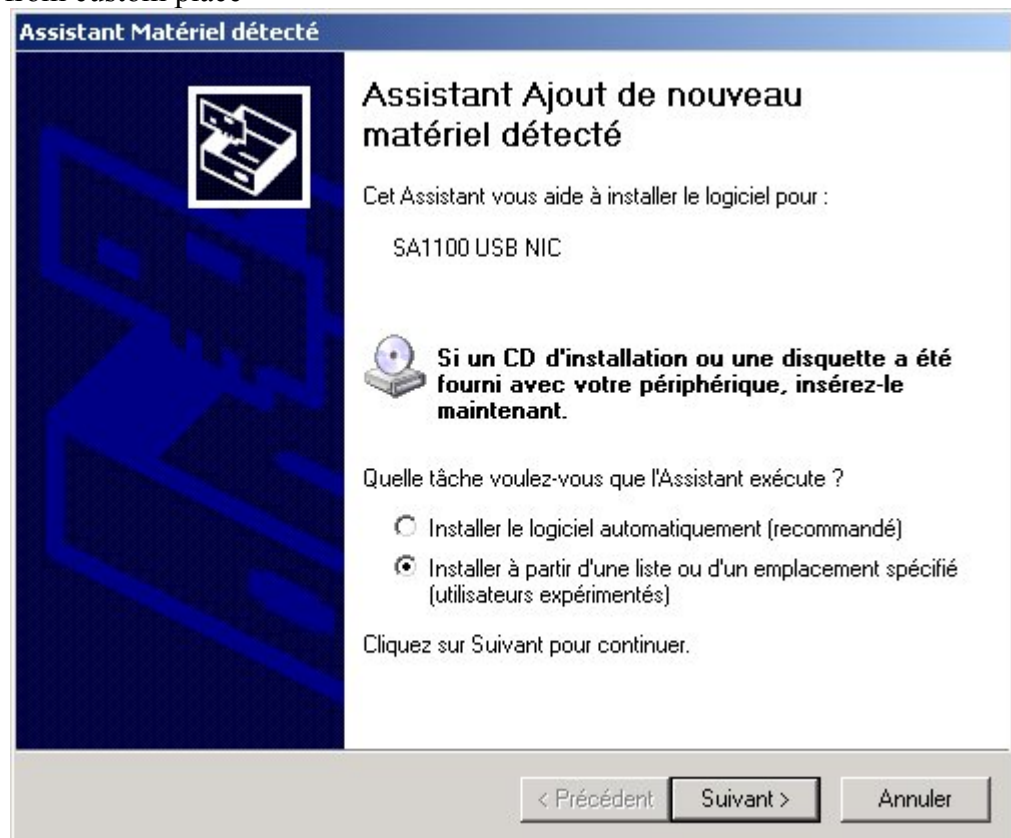
```
echo "nameserver aaa.bbb.ccc.ddd" > /etc/resolv.conf
```

- **PC Side**

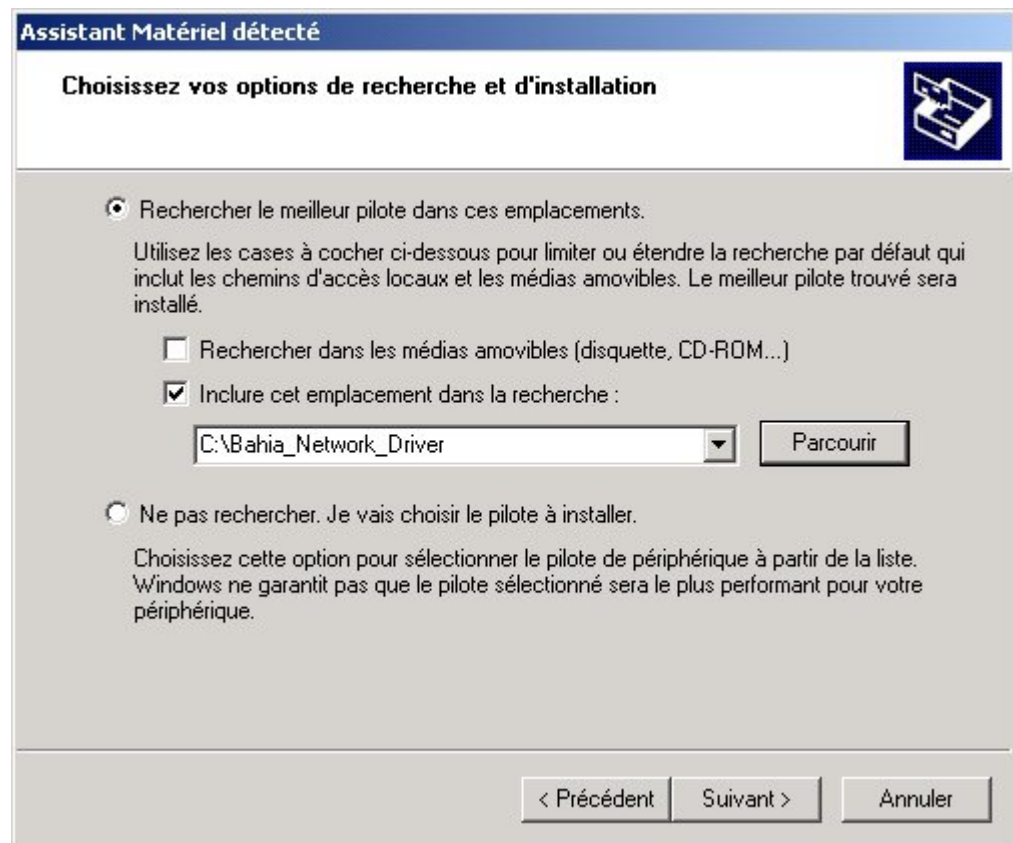
-

- **Driver installation**

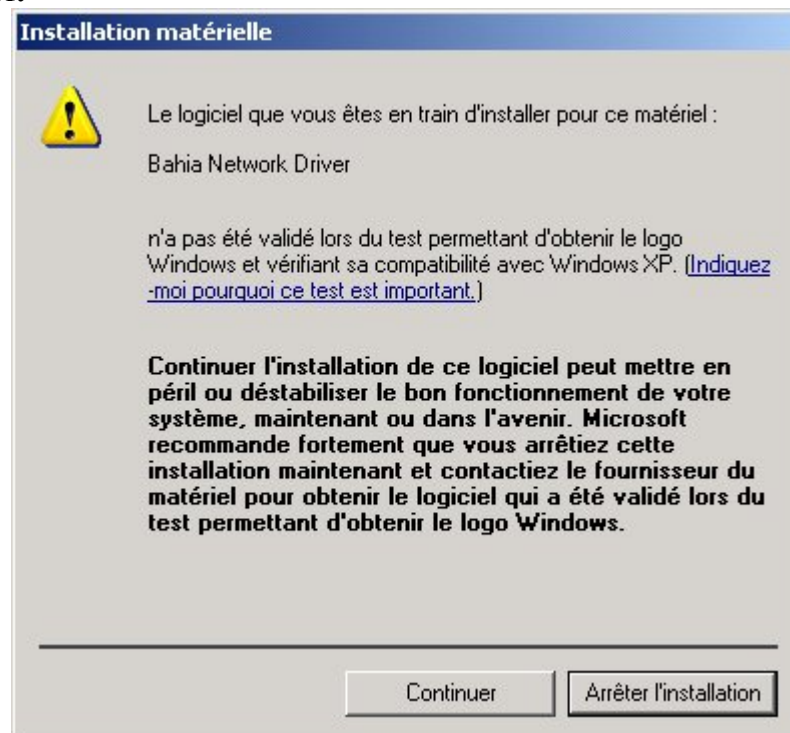
1. Uncompress the driver's archive on your hard drive
2. Plug the SA1110 handheld to the USB port of the PC
3. Windows will detect a new peripheral and ask for a driver, choose "Install from custom place"



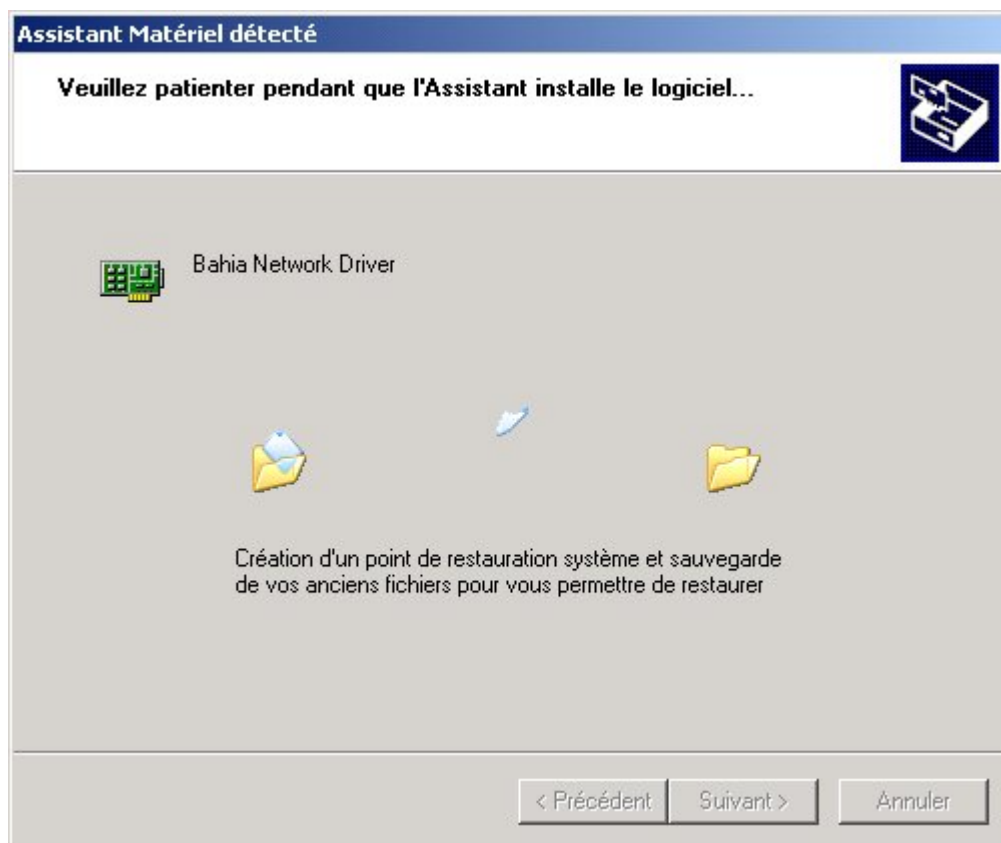
4. Browse to the folder containing the driver



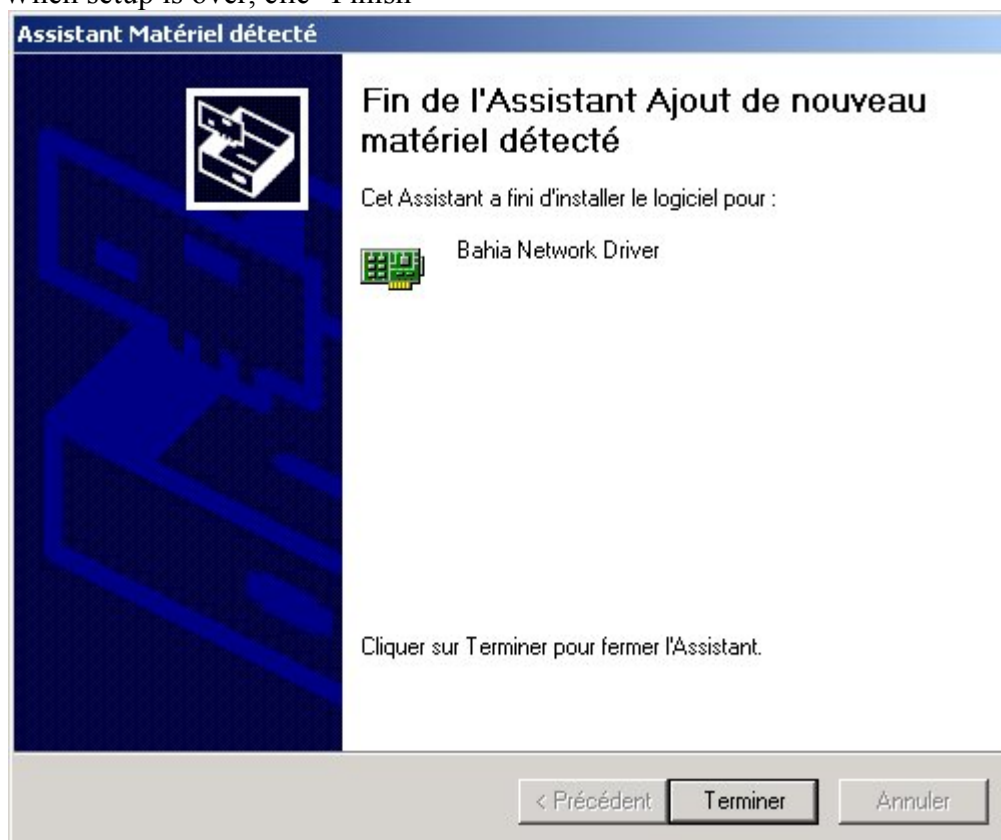
5. Answer OK when Window will detect the driver hasn't been validated by Microsoft



6. Windows will now copy the driver's files and setup the registry

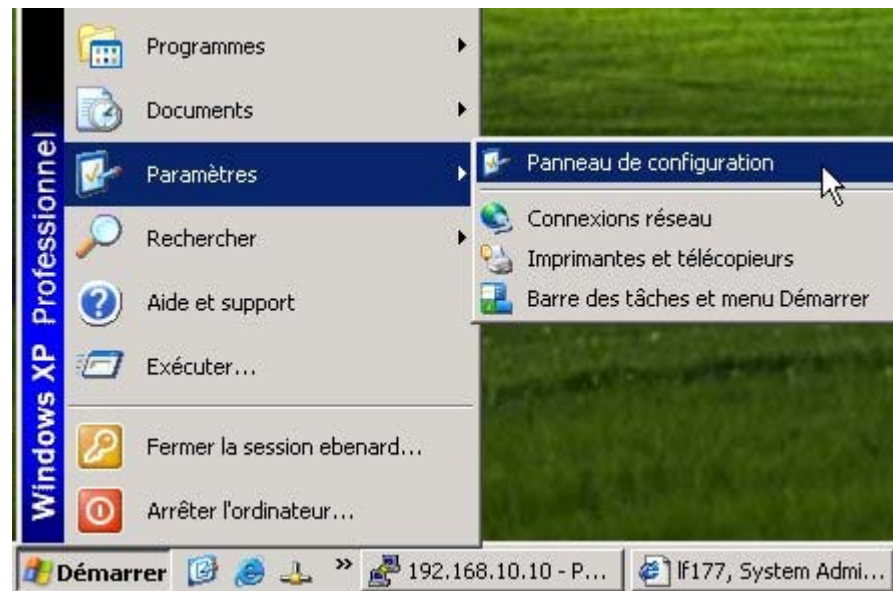


7. When setup is over, clic "Finish"



- o **Network configuration**

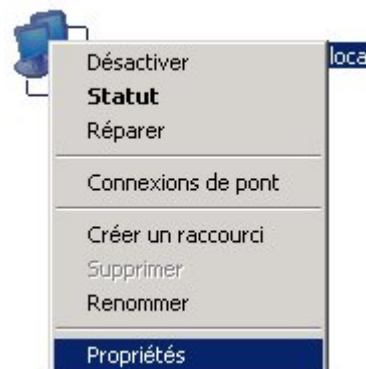
1. Go to : Start > Parameters > Control Panel > Network Interfaces



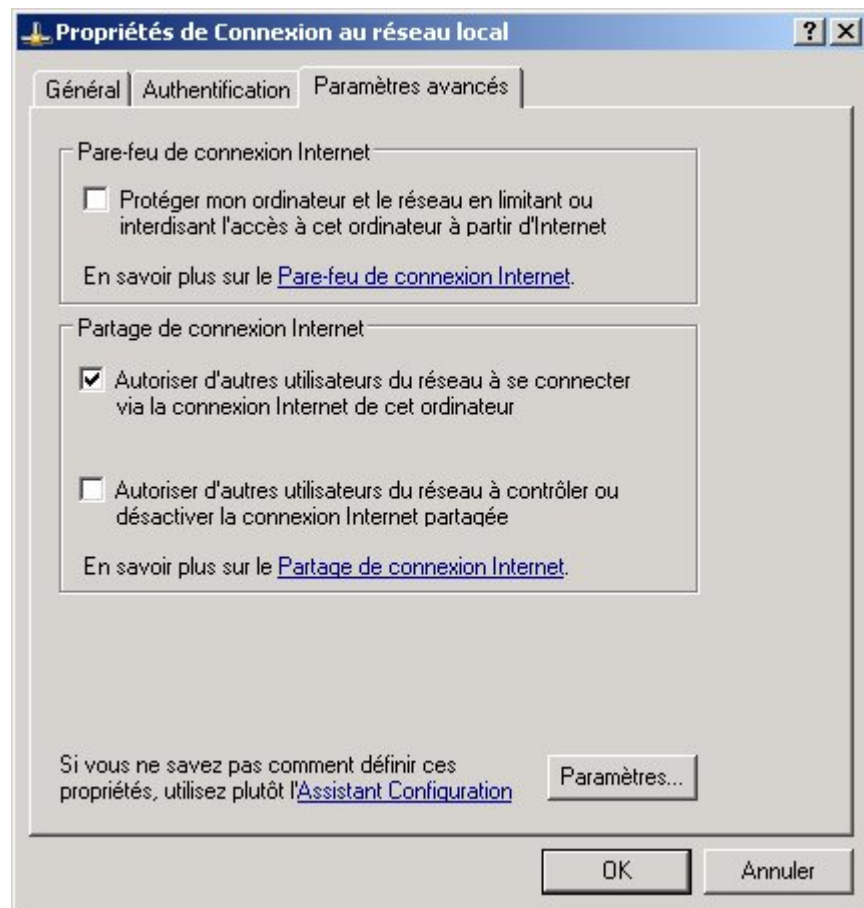
or on you desktop, right clic on "Network Neighbourhood" and select properties



2. Right clic on our primary interface and select properties



3. In the "Advanced parameters" tab, check "Allow other computers to use my Internet access"



4. Answer OK to the following message



- **Handheld Side**

-

- You should now be able to connect to Internet from the SA1110 Handheld :

```
sh-2.03# ping yahoo.fr PING yahoo.fr (217.12.3.11): 56 data bytes
64 bytes from 217.12.3.11: icmp_seq=0 ttl=239 time=363.6 ms ---
yahoo.fr ping statistics --- 1 packets transmitted, 1 packets
received, 0% packet loss round-trip min/avg/max = 363.6/363.6/363.6
ms
```

- **Possible issues**

1. *Your PC's network interface already use the subnet 192.168.0.xxx :*
use another subnet and after step 4 on the PC Side, edit the properties of the USB network interface and set its IP address to match your chosen subnet
2. *After waking up from suspend when connected, it's impossible to contact SA1110 Handheld :*
this comes from a hardware design failure. Just unplug and plug again the USB cable.

- **Technical support**

1. Feel free to ask your questions and report difficulties to use the driver to bnd_support@tactop.org
2. Feel free to report bugs you may find to bnd_bug@tactop.org



Last Update : E. Bénard : dim avr 21 23:12:42 CEST 2002